

HCS® range for glass and partition doors



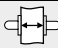



■ **Perth - HCS® GD A1880**

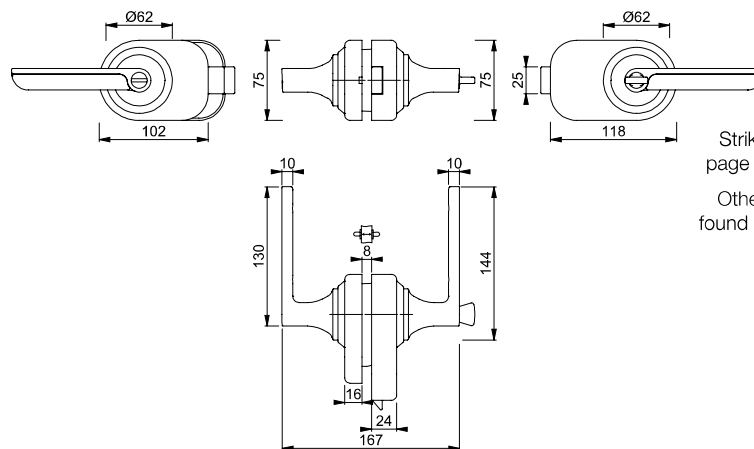
duravert®



HCS® with aluminium door handles and emergency release/turn for interior doors:

- Door type: for glass and partition doors (door thicknesses 8-10 mm)
- Version: non-keyed locking
- Adapter: aluminium with nylon base
- System core: aluminium pressure die-casting
- Latch tube: aluminium with thread
- Latchbolt: glass fibre reinforced nylon, low-noise
- Fixing: via adapter, latch tube and decorative rings
- Special feature: combines door hardware and lock in a single system, door must be prepared accordingly

Description	Version	Door type		F1-2/F9-2 Art. no.				P.U.	O.C.
HCS®, non-keyed locking		Glass/partition door	8	2537338				1	10
HCS®, keyed locking/non-keyed locking		Glass/partition door	10	2537397				1	10
HCS®, keyed locking		Glass/partition door	8	2537400				1	10
			10	2537418				1	10



Strike plates can be found on page 108 and following pages.

Other decorative rings can be found on page 32 and following pages.





■ Arles - HCS® GD A197S

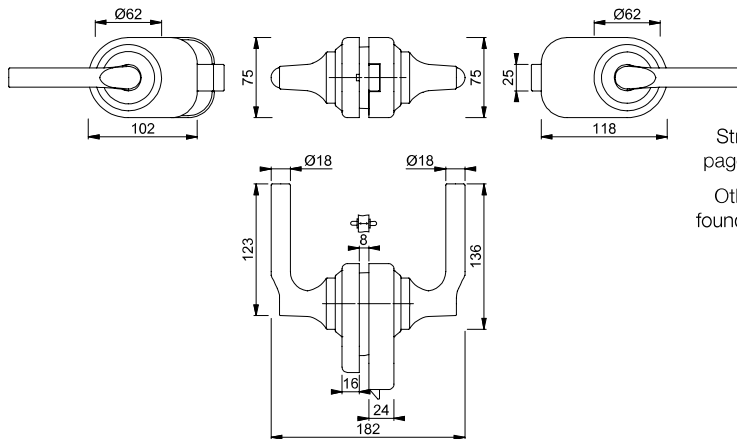
duraplus®



HCS® with aluminium door handles for interior doors:

- Door type: for glass and partition doors (door thicknesses 8-10 mm)
- Version: standard
- Adapter: aluminium with nylon base
- System core: aluminium pressure die-casting
- Latch tube: aluminium with thread
- Latchbolt: glass fibre reinforced nylon, low-noise
- Fixing: via adapter, latch tube and decorative rings
- Special feature: combines door hardware and lock in a single system, door must be prepared accordingly

Description	Version	Door type		F1-2 Art. no.				P.U.	O.C.
HCS®		Glass/partition door	8	2694211				1	10
			10	3649518				1	10
HCS®, non-keyed locking		Glass/partition door	8	2574041				1	10
			10	2574059				1	10
HCS®, keyed locking/non-keyed locking		Glass/partition door	8	2574067				1	10
			10	2574075				1	10
HCS®, keyed locking		Glass/partition door	8	2574083				1	10
			10	2574091				1	10



Strike plates can be found on page 108 and following pages.

Other decorative rings can be found on page 32 and following pages.

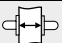


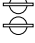
■ **Atlanta - HCS® GD A1530**

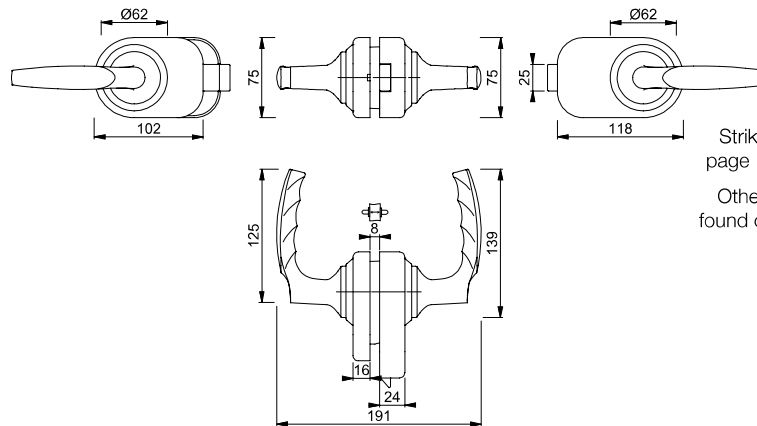
duraplus®



HCS® with aluminium door handles for interior doors:

- Door type: for glass and partition doors (door thicknesses 8-10 mm)
- Version: standard
- Adapter: aluminium with nylon base
- System core: aluminium pressure die-casting
- Latch tube: aluminium with thread
- Latchbolt: glass fibre reinforced nylon, low-noise
- Fixing: via adapter, latch tube and decorative rings
- Special feature: combines door hardware and lock in a single system, door must be prepared accordingly

Description	Version	Door type		F1-2	F9-2			P.U.	O.C.
				Art. no.	Art. no.				
HCS®		Glass/partition door	8	2694202				1	10
HCS®, non-keyed locking		Glass/partition door	8	2574201				1	10
			10	2574219				1	10
HCS®, keyed locking/non-keyed locking		Glass/partition door	8	2574243				1	10
			10	2574260	2997810			1	10
HCS®, keyed locking		Glass/partition door	8	2574278				1	10
			10	2574294				1	10



Strike plates can be found on page 108 and following pages.

Other decorative rings can be found on page 32 and following pages.


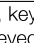

■ Groningen - HCS® GD A1885

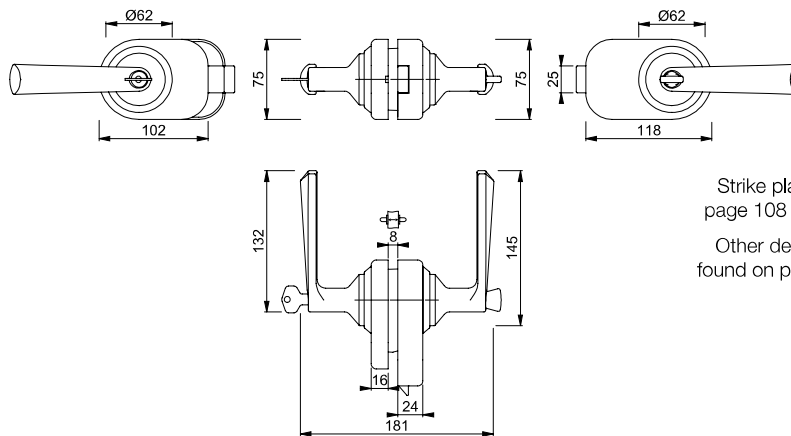
duraplus®



HCS® with aluminium door handles and keyed cylinder/turn for interior doors:

- Door type: for glass and partition doors (door thicknesses 8-10 mm)
- Version: keyed locking/non-keyed locking
- Adapter: aluminium with nylon base
- System core: aluminium pressure die-casting
- Latch tube: aluminium with thread
- Latchbolt: glass fibre reinforced nylon, low-noise
- Fixing: via adapter, latch tube and decorative rings
- Special feature: combines door hardware and lock in a single system, door must be prepared accordingly

Description	Ver- sion	Door type		F1-2 Art. no.				P.U.	O.C.
HCS®, keyed locking/ non-keyed locking	 	Glass/parti- tion door	8	2547270				1	10



Strike plates can be found on page 108 and following pages.

Other decorative rings can be found on page 32 and following pages.

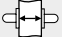



■ **London - HCS® GD A113**

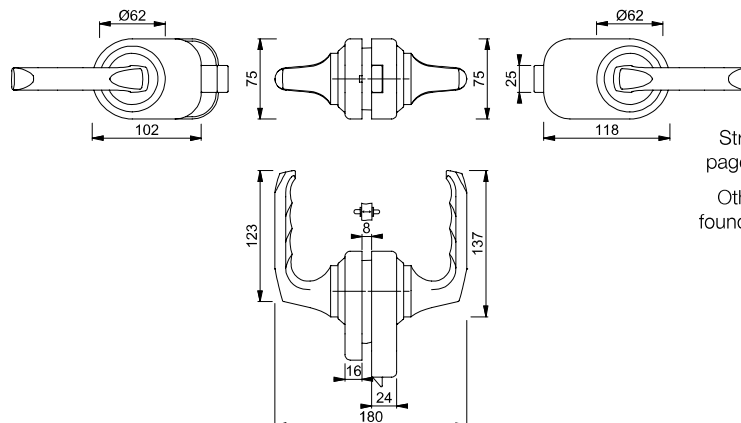
duraplus®



HCS® with aluminium door handles for interior doors:

- Door type: for glass and partition doors (door thicknesses 8-10 mm)
- Version: standard
- Adapter: aluminium with nylon base
- System core: aluminium pressure die-casting
- Latch tube: aluminium with thread
- Latchbolt: glass fibre reinforced nylon, low-noise
- Fixing: via adapter, latch tube and decorative rings
- Special feature: combines door hardware and lock in a single system, door must be prepared accordingly

Description	Version	Door type		F1-2	F9-2			P.U.	O.C.
				Art. no.	Art. no.				
HCS®		Glass/partition door	8	2694245				1	10
HCS®, non-keyed locking		Glass/partition door	8	2574104				1	10
HCS®, keyed locking/ non-keyed locking		Glass/partition door	8	2574121				1	10
			10	2574139				1	10
HCS®, keyed locking		Glass/partition door	8	2574147				1	10
			10	2574155	3134952			1	10



Strike plates can be found on page 108 and following pages.

Other decorative rings can be found on page 32 and following pages.

HCS® range for glass and partition doors





■ Paris - HCS® GD A138S

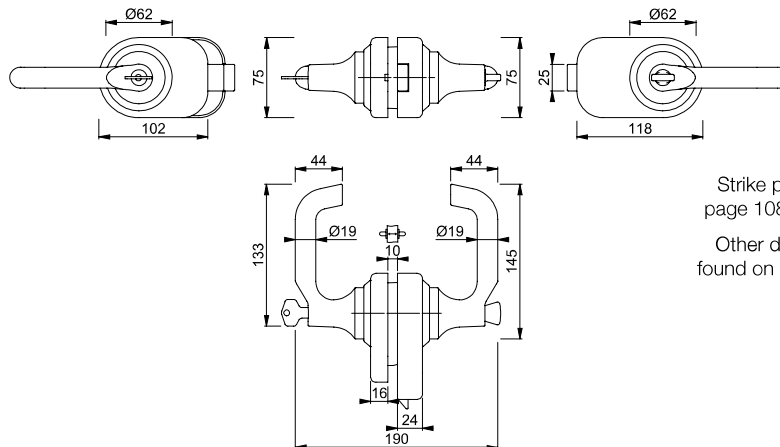
duraplus®



HCS® with aluminium door handles and keyed cylinder/turn for interior doors:

- Door type: for glass and partition doors (door thicknesses 8-10 mm)
- Version: keyed locking/non-keyed locking
- Adapter: aluminium with nylon base
- System core: aluminium pressure die-casting
- Latch tube: aluminium with thread
- Latchbolt: glass fibre reinforced nylon, low-noise
- Fixing: via adapter, latch tube and decorative rings
- Special feature: combines door hardware and lock in a single system, door must be prepared accordingly

Description	Ver-sion	Door type		F1-2	F9-2			P.U.	O.C.
				Art. no.	Art. no.				
HCS®		Glass/parti-tion door	8	2694253				1	10
				2812045				1	10
HCS®, non-keyed locking		Glass/parti-tion door	8	2573970				1	10
				10	2573988				1
HCS®, keyed locking/non-keyed locking		Glass/parti-tion door	8	2573996				1	10
				10	2574008	11548514			1
HCS®, keyed locking		Glass/parti-tion door	8	2574024	3474164			1	10
				10	2574032				1



Strike plates can be found on page 108 and following pages.

Other decorative rings can be found on page 32 and following pages.





■ **Paris - HCS® GD K138S**

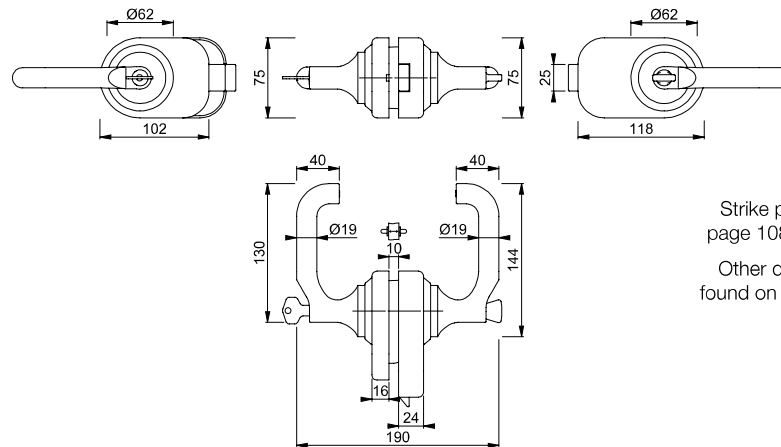
duraplus®



HCS® with nylon door handles and keyed cylinder/turn for interior doors:

- Door type: for glass and partition doors (door thicknesses 8-10 mm)
- Version: keyed locking/non-keyed locking
- Adapter: nylon
- System core: aluminium pressure die-casting
- Latch tube: aluminium with thread
- Latchbolt: glass fibre reinforced nylon, low-noise
- Fixing: via adapter, latch tube and decorative rings
- Special feature: combines door hardware and lock in a single system, door must be prepared accordingly

Description	Version	Door type		F7016M	F9005M	F9010M		P.U.	O.C.
				Art. no.	Art. no.	Art. no.			
HCS®		Glass/partition door	8		782116			1	10
HCS®, non-keyed locking		Glass/partition door	8		2574358			1	10
			10		2574374			1	10
HCS®, keyed locking/non-keyed locking		Glass/partition door	8		786916			1	10
			10	782802	783748	2574411		1	10
HCS®, keyed locking		Glass/partition door	8		781690	2574438		1	10
			10	781829	781270			1	10



Strike plates can be found on page 108 and following pages.

Other decorative rings can be found on page 32 and following pages.

■ HCS® GD A760/761

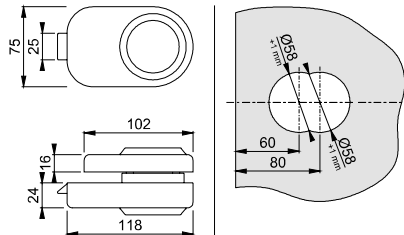
duraplus®



HCS® aluminium adapter with latch set:

- Door type: for glass and partition doors (side-hung, door thicknesses 8-10 mm)
- **Please note:** only suitable for rebated door HCS®

Description	Door type	F1-2 Art. no.	F9005STR Art. no.	P.U.	O.C.	
						HCS® adapter with latch set, piece



■ HCS® GD A761/762

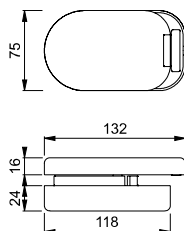
duraplus®

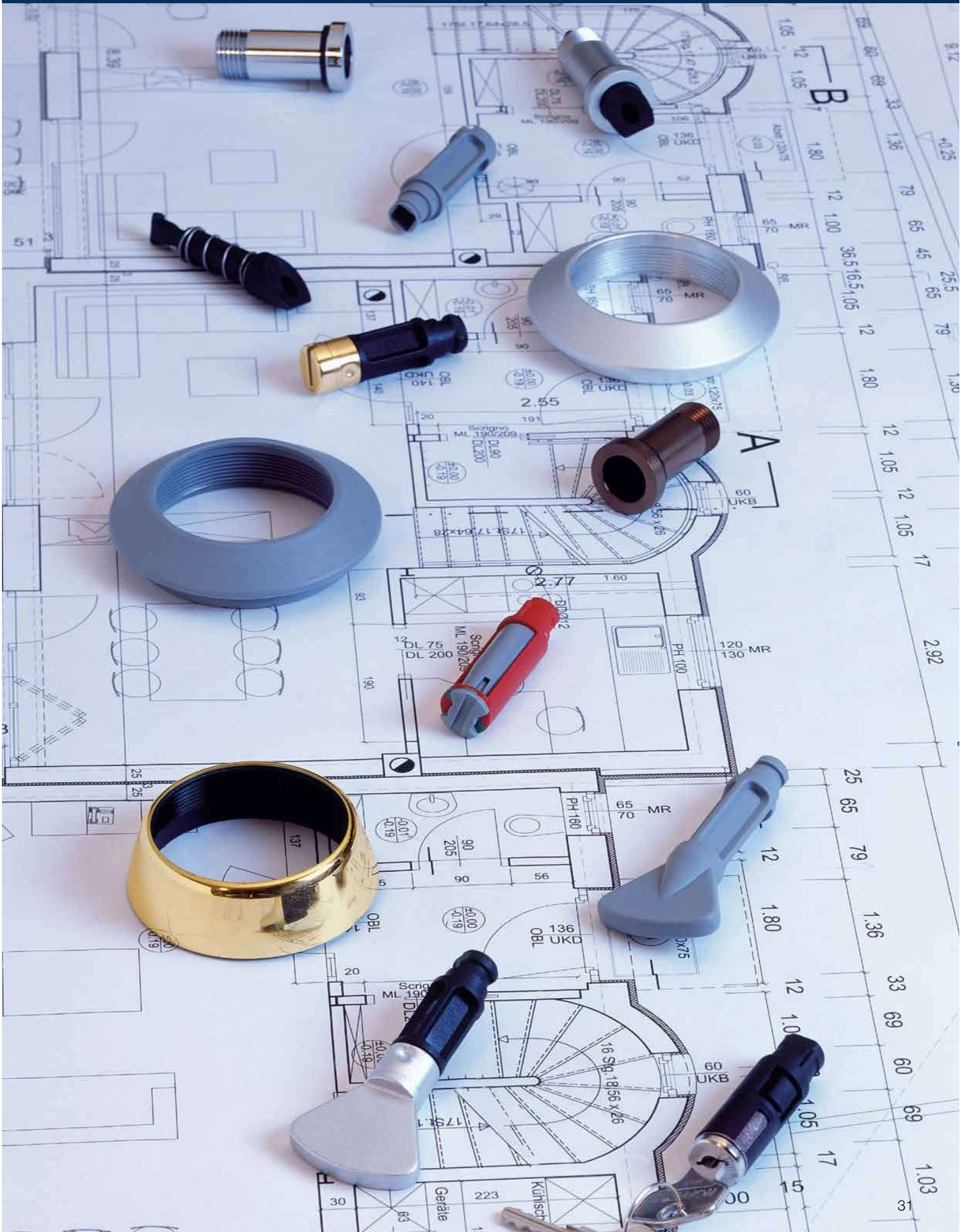


HCS® aluminium latch part:

- Door type: for glass and partition doors (inactive door leaves, door thicknesses 8-10 mm)

Description	Door type	F1-2 Art. no.	F9-2 Art. no.	F9005STR Art. no.	F9010STR Art. no.	P.U.	O.C.
		10	2574542	2901970	787203	1	10



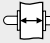


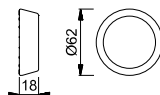
■ HCS® decorative ring (aluminium)

HCS® aluminium decorative rings with thread:

- Door type: for flush doors (door thicknesses 25-35 mm)
- Fixing: to be screwed on



Description	Ø			F1-2			P.U.	O.C.
				Art. no.				
HCS® decorative ring, pair	62		25-35	2575051			10	60

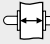


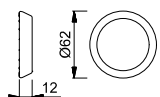
■ HCS® decorative ring (aluminium)

HCS® aluminium decorative rings with thread:

- Door type: for flush doors (door thicknesses 35-43 mm) and rebated doors (door thicknesses 38-43 mm)
- Fixing: to be screwed on



Description	Ø			F1-2	F9-2		P.U.	O.C.
				Art. no.	Art. no.			
HCS® decorative ring, pair	62		35-43	2453046	2575027		10	60

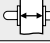


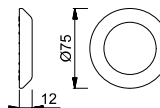
■ HCS® decorative ring (aluminium)

HCS® aluminium decorative rings with thread:

- Door type: for flush doors (door thicknesses 35-43 mm) and rebated doors (door thicknesses 38-43 mm)
- Fixing: to be screwed on
- Special feature: suitable for renovation



Description	Ø			F1-2	F9-2		P.U.	O.C.
				Art. no.	Art. no.			
HCS® decorative ring, pair	75		35-43	2575094	2575115		10	60




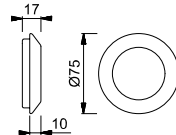
■ HCS® decorative ring (aluminium)



HCS® aluminium decorative rings with thread:

- Door type: for flush doors (door thicknesses 43-53 mm)
- Fixing: to be screwed on
- Special feature: suitable for renovation

Description	Ø			F1-2	F9-2	F9714M	P.U.	O.C.
				Art. no.	Art. no.	Art. no.		
HCS® decorative ring, pair	75		43-53	2575123	2575140	11749374	10	60



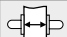
■ HCS® decorative ring (stainless steel)

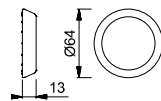


HCS® stainless steel decorative rings with threaded nylon insert:

- Door type: for flush doors (door thicknesses 35-43 mm) and rebated doors (door thicknesses 38-43 mm)
- Fixing: to be screwed on



Description	Ø			F68	F69	P.U.	O.C.
				Art. no.	Art. no.		
HCS® decorative ring, pair	64		35-43	783656	785711	10	60




■ HCS® decorative ring (stainless steel)

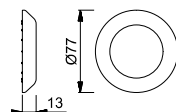


HCS® stainless steel decorative rings with threaded nylon insert:

- Door type: for flush doors (door thicknesses 35-43 mm) and rebated doors (door thicknesses 38-43 mm)
- Fixing: to be screwed on
- Special feature: suitable for renovation



Description	Ø			F68	P.U.	O.C.
				Art. no.		
HCS® decorative ring, pair	77		35-43	828074	10	60

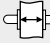


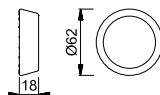


■ HCS® decorative ring (nylon)

HCS® nylon decorative rings with thread:

- Door type: for flush doors (door thicknesses 25-35 mm)
- Fixing: to be screwed on

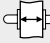

Description	Ø			F7022M Art. no.	F7032M Art. no.	F7037M Art. no.	F9005M Art. no.	P.U.	O.C.
HCS® decorative ring, pair	62		25-35	2575254	2575318	2575334	658091	10	60

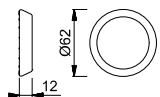


■ HCS® decorative ring (nylon)

HCS® nylon decorative rings with thread:

- Door type: for flush doors (door thicknesses 35-43 mm) and rebated doors (door thicknesses 38-43 mm)
- Fixing: to be screwed on

Description	Ø			F7016M Art. no.	F7022M Art. no.	F7037M Art. no.	F9005M Art. no.	P.U.	O.C.
HCS® decorative ring, pair	62		35-43	658053	2575351	2575377	658084	10	60
Description	Ø			F9010M Art. no.				P.U.	O.C.
HCS® decorative ring, pair	62		35-43	658114				10	60

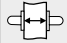
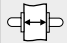


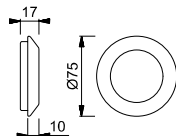


■ HCS® decorative ring (nylon)

HCS® nylon decorative rings with thread:

- Door type: for flush doors (door thicknesses 43-53 mm)
- Fixing: to be screwed on
- Special feature: suitable for renovation

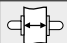
Description	∅			F7022M Art. no.	F7032M Art. no.	F7037M Art. no.	F9005M Art. no.	P.U.	O.C.
HCS® decorative ring, pair	75		43-53	2575457	2575473	2575502	1694104	10	60
Description	∅			F9010M Art. no.				P.U.	O.C.
HCS® decorative ring, pair	75		43-53	2575422				10	60

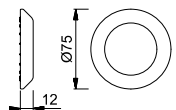


■ HCS® decorative ring (nylon)

HCS® nylon decorative rings with thread:

- Door type: for flush doors (door thicknesses 35-43 mm) and rebated doors (door thicknesses 38-43 mm)
- Fixing: to be screwed on
- Special feature: suitable for renovation

Description	∅			F7032M Art. no.	F7037M Art. no.	F9005M Art. no.		P.U.	O.C.
HCS® decorative ring, pair	75		35-43	2575393	2575406	658107		10	60

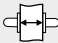


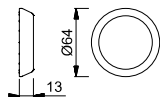
■ HCS® decorative ring (brass)

HCS® brass decorative rings with threaded nylon insert:

- Door type: for flush doors (door thicknesses 35-43 mm) and rebated doors (door thicknesses 38-43 mm)
- Fixing: to be screwed on



Description	∅			F41 Art. no.	F71 Art. no.			P.U.	O.C.
HCS® decorative ring, pair	64		35-43	658688	650842			10	60

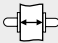


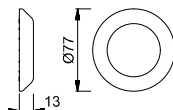
■ HCS® decorative ring (brass)

HCS® brass decorative rings with threaded nylon insert:

- Door type: for flush doors (door thicknesses 35-43 mm) and rebated doors (door thicknesses 38-43 mm)
- Fixing: to be screwed on
- Special feature: suitable for renovation



Description	∅			F71 Art. no.				P.U.	O.C.
HCS® decorative ring, pair	77		35-43	658145				10	60

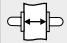


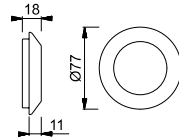
■ **HCS® decorative ring (brass)**

HCS® brass decorative rings wwith threaded nylon inser:

- Door type: for flush doors (door thicknesses 43-53 mm)
- Fixing: to be screwed on
- Special feature: suitable for renovation



Description	Ø			F41	F71			P.U.	O.C.
				Art. no.	Art. no.				
HCS® decorative ring, pair	77		43-53	2195606	1720886			10	60



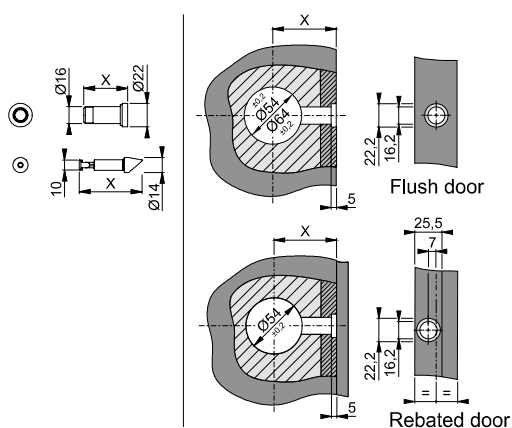
HCS® latch set (aluminium)

HCS® aluminium latch set:

- Door type: for flush doors and rebated doors (rebate width 24 mm)
- Latch tube: aluminium with thread
- Latchbolt: glass fibre reinforced nylon, low-noise



Description	Backset	F1	F4	P.U.	O.C.
		Art. no.	Art. no.		
HCS® latch set, piece	50	1750719	658282	10	60
	60	2478614	658299	10	60
	70	2285396	658305	10	60
	80	2491106	658312	10	60



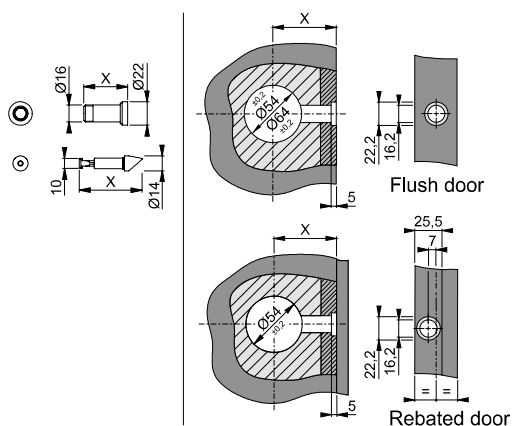
HCS® latch set (brass)

HCS® brass latch set:

- Door type: for flush doors and rebated doors (rebate width 24 mm)
- Latch tube: brass with thread
- Latchbolt: glass fibre reinforced nylon, low-noise



Description	Backset	F49	F70	P.U.	O.C.
		Art. no.	Art. no.		
HCS® latch set, piece	50	2619317	658176	10	60
	60	2099649	658183	10	60
	70	2619325	658190	10	60

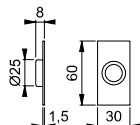




HCS® FHA1

- HCS®** stainless steel latch tube adapter:
- Door type: for flush doors (latch bore 25 mm)
 - Special feature: suitable for renovation

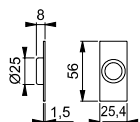
Description	Door type	Dimensions	ESM				P.U.	O.C.
			Art. no.					
HCS®-Latch tube adapter, piece	Flush door	60 x 30	658244				10	60



HCS® FHA4

- HCS®** stainless steel latch tube adapter:
- Door type: for flush doors (latch bore 25 mm)
 - Special feature: suitable for renovation

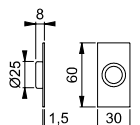
Description	Door type	Dimensions	F68	F69			P.U.	O.C.
			Art. no.	Art. no.				
HCS®-Latch tube adapter, piece	Flush door	56 x 25.4	658251	3618818			10	60



HCS® FHA1

- HCS®** brass latch tube adapter:
- Door type: for flush doors (latch bore 25 mm)
 - Special feature: suitable for renovation

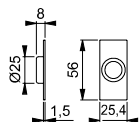
Description	Door type	Dimensions	F71				P.U.	O.C.
			Art. no.					
HCS®-Latch tube adapter, piece	Flush door	60 x 30	658268				10	60



HCS® FHA4

- HCS®** brass latch tube adapter:
- Door type: for flush doors (latch bore 25 mm)
 - Special feature: suitable for renovation

Description	Door type	Dimensions	F71				P.U.	O.C.
			Art. no.					
HCS®-Latch tube adapter, piece	Flush door	56 x 25.4	658275				10	60



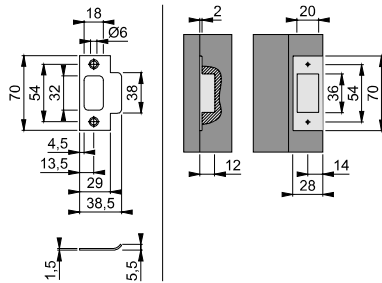
HCS® SB-A

HCS® stainless steel strike plate:

- Door type: for door frames of flush doors
- Fixing: for multi-purpose screws



Description	Door type	Dimensions	F69-9			P.U.	O.C.
			Art. no.				
HCS® strike plate, piece	Flush door	70 x 38.5	658206			10	60



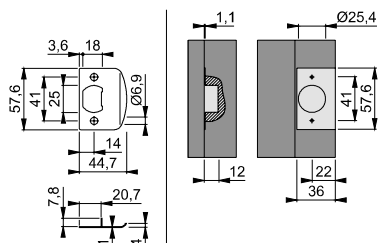
HCS® SB-B

HCS® stainless steel strike plate:

- Door type: for door frames of flush doors
- Fixing: for multi-purpose screws



Description	Door type	Dimensions	F69-9			P.U.	O.C.
			Art. no.				
HCS® strike plate, piece	Flush door	57.6 x 44.7	658213			10	60



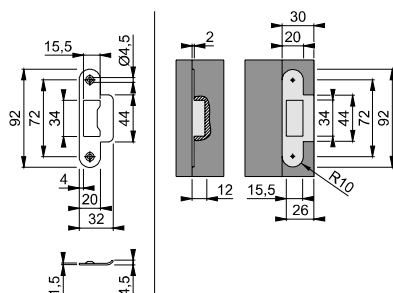
HCS® SB-C

HCS® stainless steel strike plate:

- Door type: for door frames of flush doors
- Fixing: for multi-purpose screws



Description	Door type	Dimensions	ESR			P.U.	O.C.
			Art. no.				
HCS® strike plate, piece	Flush door	92 x 32	623082			10	60



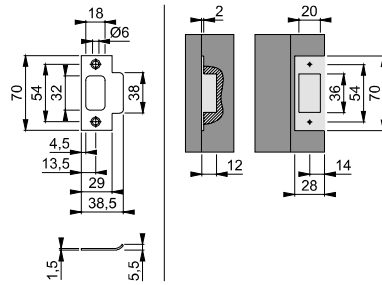
HCS® SB-A



HCS® brass strike plate:

- Door type: for door frames of flush doors
- Fixing: for multi-purpose screws

Description	Door type	Dimensions	F71-9				P.U.	O.C.
			Art. no.					
HCS® strike plate, piece	Flush door	70 x 38,5	658220				10	60



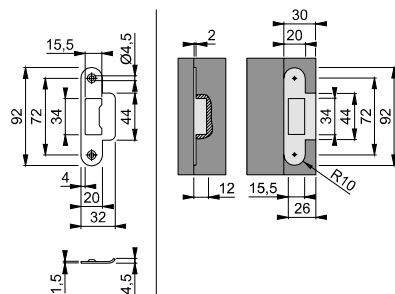
HCS® SB-C



HCS® brass strike plate:

- Door type: for door frames of flush doors
- Fixing: for multi-purpose screws

Description	Door type	Dimensions	F71-9				P.U.	O.C.
			Art. no.					
HCS® strike plate, piece	Flush door	92 x 32	621255				10	60



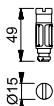


HCS® clip-in SK-15 (aluminium)

HCS® aluminium clip-in emergency release:

- for HCS® models designed to incorporate a non-keyed locking function
- Fixing: to be clipped in
- **Please note:** only clip into assembled HCS® as cannot be disassembled again

Description	Ver-sion			F1-2	F9-2			P.U.	O.C.
				Art. no.	Art. no.				
HCS® clip-in SK-15, piece	⊖			2574948	2574972			10	60

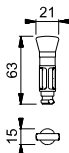


HCS® clip-in OL-15 (aluminium)

HCS® aluminium clip-in turn:

- for HCS® models designed to incorporate a non-keyed locking function
- Fixing: to be clipped in
- **Please note:** only clip into assembled HCS® as cannot be disassembled again

Description	Ver-sion			F1-2	F9-2			P.U.	O.C.
				Art. no.	Art. no.				
HCS® clip-in OL-15, piece	⊖			2574921	2574964			10	60

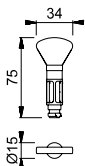


HCS® clip-in OL-15-SEN (aluminium)

HCS® large aluminium clip-in turn:

- for HCS® models designed to incorporate a non-keyed locking function
- Fixing: to be clipped in
- **Please note:** only clip into assembled HCS® as cannot be disassembled again

Description	Ver-sion			F1-2	F9-2			P.U.	O.C.
				Art. no.	Art. no.				
HCS® clip-in OL-15-SEN, piece	⊖			2574956	2574981			10	60



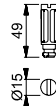
HCS® clip-in SK-15 (nylon)



HCS® nylon clip-in emergency release:

- for **HCS®** models designed to incorporate a non-keyed locking function
- Fixing: to be clipped in
- **Please note:** only clip into assembled **HCS®** as cannot be disassembled again

Description	Ver- sion			F7016M	F7037M	F9005M	F9010M	P.U.	O.C.
				Art. no.	Art. no.	Art. no.	Art. no.		
HCS® clip-in SK-15, piece	⊖			2574841	2602312	572724	2574711	10	60



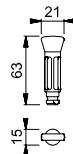
HCS® clip-in OL-15 (nylon)



HCS® nylon clip-in turn:

- for **HCS®** models designed to incorporate a non-keyed locking function
- Fixing: to be clipped in
- **Please note:** only clip into assembled **HCS®** as cannot be disassembled again

Description	Ver- sion			F7016M	F7022M	F7037M	F9005M	P.U.	O.C.
				Art. no.	Art. no.	Art. no.	Art. no.		
HCS® clip-in OL-15, piece	⊖			2574833	2680821	2602304	572717	10	60
Description	Ver- sion			F9010M				P.U.	O.C.
HCS® clip-in OL-15, piece	⊖			2574702				10	60



HCS® clip-in RGSK-15 (nylon)



HCS® nylon clip-in emergency release with red-green-indicator:

- for **HCS®** models designed to incorporate a non-keyed locking function
- Fixing: to be clipped in
- **Please note:** only clip into assembled **HCS®** as cannot be disassembled again

Description	Ver- sion			F7037M	F9005M			P.U.	O.C.
				Art. no.	Art. no.				
HCS® clip-in RGSK-15, piece	⊖			2602291	658152			10	60



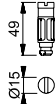


HCS® clip-in SK-15 (brass)

HCS® brass clip-in emergency release:

- for HCS® models designed to incorporate a non-keyed locking function
- Fixing: to be clipped in
- **Please note:** only clip into assembled HCS® as cannot be disassembled again

Description	Ver- sion			F41	F49	F71		P.U.	O.C.
				Art. no.	Art. no.	Art. no.			
HCS® clip-in SK-15, piece	⊖			658664	2215902	575138		10	60

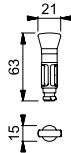


HCS® clip-in OL-15 (brass)

HCS® brass clip-in turn:

- for HCS® models designed to incorporate a non-keyed locking function
- Fixing: to be clipped in
- **Please note:** only clip into assembled HCS® as cannot be disassembled again

Description	Ver- sion			F41	F49	F71		P.U.	O.C.
				Art. no.	Art. no.	Art. no.			
HCS® clip-in OL-15, piece	⊖			658657	2215890	575121		10	60








HCS® clip-in ZYL-15



HCS® clip-in keyed cylinder with reversible key:

- for HCS® models designed to incorporate a locking function
- Fixing: to be clipped in
- **Please note:** only clip into assembled HCS® as cannot be disassembled again

Description	Version	Locking		nickel-plated				P.U.	O.C.
				Art. no.					
HCS® clip-in ZYL-15, pair				766260				10	60
HCS® clip-in ZYL-15, piece				591732				10	60
HCS® clip-in ZYL-15, pair		4W01		6889232				10	60
HCS® clip-in ZYL-15, pair		4W03		6889273				10	60
HCS® clip-in ZYL-15, pair		4W23		6517783				10	60








HCS® clip-in ZYL (group key locking cylinder)



HCS® clip-in component – group key locking cylinder with reversible key:

- For HCS® models to be fitted with group-keying
- Fixing: to be clipped in
- **Please note:** fit only on mounted HCS®, as it cannot be disassembled again

Description	Version	Locking		nickel-plated				P.U.	O.C.
				Art. no.					
HCS® clip-in ZYL (group key locking cylinder), piece		GS-DHIJKL		782796				10	60
HCS® clip-in ZYL (group key locking cylinder), pair		GS-DHIJKL		780952				100	100
HCS® clip-in ZYL (group key locking cylinder), piece		C		10732601				10	60
HCS® clip-in ZYL (group key locking cylinder), pair		C		10732598				10	60
HCS® group key, 4 pieces				781485				10	60

